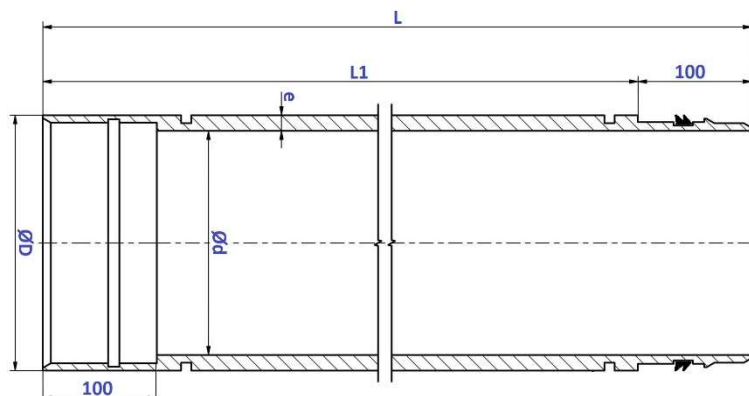




MODULAR PIPES PP

Modular pipes can be used to make pipelines with limited installation space. They are made of the highest quality polypropylene, which guarantees the reliability of the installations laid out of them. The individual pipe sections are connected by means of permanent snaps with an additional sealing system. This effectively prevents their disconnection, guarantees the tightness of the installation. For use in trenchless and excavation technologies. In trenchless technologies, it is possible to use both the method of pulling in and pushing pipes.



Technical data:

| Parameter | unit | Ø110x10.0 | Ø180x10.2 | Ø225x13.8 | Ø250x14.2 | Ø280x15.9 | Ø315x17.9 | Ø400x22.7 | Ø500x28.3 |
|-----------------------------|------|-----------|-----------|-----------|-----------|-----------|-----------|-----------|-----------|
| Ø outside (D) | [mm] | 110 | 180 | 225 | 250 | 280 | 315 | 400 | 500 |
| Ø inside (d) | [mm] | 90,0 | 159,6 | 197,4 | 221,6 | 248,2 | 279,2 | 354,6 | 443,4 |
| Thickness (e) | [mm] | 10,0 | 10,2 | 13,8 | 14,2 | 15,9 | 17,9 | 22,7 | 28,3 |
| Permissible tensile force | [kN] | 22 | 32 | 65 | 69 | 82 | 105 | 125 | 155 |
| Permissible insertion force | [kN] | 45 | 60 | 110 | 120 | 140 | 200 | 210 | 230 |
| Length (L1) | [mm] | 600 | 600 | 600 | 600 | 600 | 600 | 600 | 600 |
| Length (L) | [mm] | 700 | 700 | 700 | 700 | 700 | 700 | 700 | 700 |
| Weight of one module | [kg] | 1,65 | 2,85 | 4,47 | 6,79 | 6,95 | 8,81 | 14,26 | 22,28 |



PP pipes are approved
by the Building Research Institute